

A scenic view of a residential area. In the foreground, there is a green lawn with a black rubber safety mat. On the mat, there is a playground structure with a green frame and two swings. To the left, there is a metal frame with a slide. In the middle ground, there are several houses with brown tiled roofs and a wooden fence. The background is a dense forest of green trees under a clear sky.

# *The Glenfarg Newsletter*

Issue 246 September 2020

<b>Contents</b>	<b>Advertise In The Glenfarg Newsletter</b>
Editorial..... 3	You can advertise in the Newsletter for very reasonable rates as below which are annual i.e. 4 issues.
Contacts..... 4	Full Page £70 per annum
Village Hall Groups..... 6	Half Page £35
Joint CoVid Statement..... 7	Quarter Page £20
Arngask Church News ..... 8	Single issue advert prices available on request.
W.R.I..... 12	Advert enquiries should be made by initially contacting the editorial team.
Glenfarg Hall News..... 14	
Apricot Roulade..... 16	<p style="text-align: center;"><b>Editor</b> Robin Watson 830 355 newsletter@glenfarg.org</p> <p style="text-align: center;"><b>Treasurer</b> Daniel Horsman 830 067</p> <p style="text-align: center;"><b>Distribution</b> Glenfarg Village Store 830 823</p> <p style="text-align: center;"><b>Front Cover</b> Editor</p>
Glenfarg Folk Club..... 18	
The GITs..... 20	<p>The views expressed by contributors to this newsletter are entirely their own. Publication within this newsletter does not imply that the Editors or Community Council agrees with, or supports, those views. The editor will not be held responsible for any factual inaccuracies, or incorrect inferences drawn.</p> <p>Advertisements in the Newsletter are accepted in good faith. The Community Council and the editor are not in any way endorsing the businesses advertised in this publication.</p> <p style="text-align: center;"><b>DEADLINE FOR NEXT ISSUE</b></p> <p>If you want to contribute to the Newsletter here is how to calculate the deadline. It is published on the 1st March, 1st June, 1st September and 1st December. Copy should be submitted before the 15th of the month prior to the upcoming publication.</p> <p style="text-align: center;">email to <a href="mailto:newsletter@glenfarg.org">newsletter@glenfarg.org</a></p>
John Anderson..... 23	
Brian Lascelles..... 24	
Glenfarg Community Cinema.... 26	
Glenfarg Tennis Club..... 29	
Wallace Park..... 30	
Scouting..... 32	
Farming In Lockdown..... 34	
G.D.I.B..... 37	
SUPing..... 38	
Community Council Minutes..... 43	
Index Of Advertisers..... 67	
General Information..... 68	



# Editorial

Welcome back to our readers of the paper newsletter. Our printer has returned to normal production so we are back in business again.

It was with sadness that I learned of the death of Brian Lascelles who had been a resident in Glenfarg and a good friend to the village. Read on page 24 his obituary and his legacy to the village in his establishment of the Glenfarg Green.

There is a joint statement from the councillors representing our area with an appreciation of the efforts of the community and also information about local services available during the pandemic.

The front cover picture shows the upgraded play area in Wallace Park. It was designed by the Perth & Kinross Council landscape architect, in consultation with the Friends of the park. The wooden structures are the preferred options of the council and are made in-house. Read the latest news of from the Friends of Wallace Park on page 30.

The pandemic has affected the organisations in Glenfarg in different ways. The community cinema has had to wait for the village hall to become usable, however the tennis club has benefitted with increased membership. All of the details of these groups and what is happening with the hall can be read in this issue.

The GITs the (Glenfarg Improvement Team) have not been idle. Read about their restoration of the benches in Elm Row.

Emma Cheape has another interesting farming article where she observes that things on the farm haven't much changed due to lockdown and she looks forward to running competitions in the Equestrian Cross Country.

Regular contributor Christine Morton writes about her exploits in 'SUPing. which translates to 'stand up paddle boarding'. It looks like a lot of fun if somewhat precarious.

Thanks to Alison Harrison for her articles on baking and the WRI.

As always stay safe.



Robin Watson

e-mail: [newsletter@glenfarg.org](mailto:newsletter@glenfarg.org)

# Contacts

Service/Organisation	Contact Name/ Email Address	Telephone
<b>Community Council</b>	Chairperson: Margaret Ponton	830 611
	Secretary: Ian Pilmer secretary@glenfarg.org	830 817
<b>P&amp;K Councillor</b>	Cllrs. Barnacle, Watters, Purves and Robertson	See P&KC website
<b>Police</b>	Non emergency contact number	101
	Crimestoppers	0800 555 111
<b>Household Utilities</b>	Scottish Water Helpline	0800 0778 778
	Scottish Hydro Electric Helpline	0800 300 999
<b>Dog Warden</b>	Kirsteen Mackenzie	01738 476476
<b>PA Contact</b>	Mark Crossey	830 201
<b>Arngask Church</b>	Bill Macpherson (Session Clerk) Session.Clerk@ada-church.org.uk	830 430
<b>Arngask School</b>	Suzanne Miller (Head Teacher)	867 250
<b>Accordion &amp; Fiddle</b>	Stewart Smith isobelsmith45@btinternet.com	830 6296
<b>Baby &amp; Toddlers</b>	Catherine Mason catherinemason@hotmail.co.uk	07583 022 608
<b>Badminton Club</b>	Alan Clark	830 246
<b>Beavers</b>	Christine Morton	830 210
<b>Bowling Club</b>	Karen Parker glenfargbc@gmail.com	830 529
<b>Bridge Club</b>	Evelyn Brockbank	830 713
<b>Brownies</b>	Jan Pedley glenfargbrownies@gmail.com	830 195



<b>Service/Organisation</b>	<b>Contact Name/ Email Address</b>	<b>Telephone</b>
<b>Chair Yoga</b>	Caroline Waring	830 239
<b>Cubs</b>	Robert Morton rmorton956@gmail.com	830 210
<b>Curling - Men's</b>	Lorne Findlay	830 441
<b>Curling - Women's</b>	Margaret Jenkins	830 453
<b>Folk Club</b>	Philip Ponton info@glenfargfolkclub.com	830 611
<b>GDIB</b>	Kate Armstrong	830 343
<b>Community Cinema</b>	Janet Watson	830 355
<b>Glenfarg Oil Buying Syndicate</b>	Tom McAulay gobs@glenfarg.org	07786 705261
<b>Knit &amp; Natter</b>	Ineke Watt	830 345
<b>Neighbourhood Watch</b>	Linsey Penman	830 549
<b>Old Folks Association</b>	Philip Ponton	830 611
<b>Riding School</b>	Angela Stocks	830 262
<b>Scouts</b>	Robert Morton robert.morton1@tesco.net	830 210
<b>SWI</b>	Margaret Scott	830 369
<b>Tennis Club</b>	Tim Corcoran tim@taraw.plus.com	830 879
<b>Total Body Circuit</b>	Julie Ramsay jrinsanity@gmail.com	830 370
<b>Village Hall</b>	Tanya McKibbon glenfargvillagehallbookings@gmail.com	07984 275756
<b>Website</b>	Janet Watson <i>editor@glenfarg.org</i>	830 355
<b>Wine Club</b>	David Aird	830 370
<b>Zumba</b>	Gale Paterson	07823 334 476

# A Village Hall for All

Day	Time	Organisation
Monday	9.30am - 11.30am	<b>Baby &amp; Toddler Group</b>
	6.00pm - 7.30pm	<b>Cubs</b>
	8.00pm - 10.00pm	<b>Ladies' Badminton</b>
	7.30pm - 9pm 1st Monday every other month	<b>CC Meeting</b>
Tuesday	9.30am - 10am	<b>Metafit</b>
	5.45pm - 6.45pm	<b>Beavers</b>
	7.30pm - 9.00pm	<b>Scouts</b>
Wednesday	6.00pm - 7.30pm	<b>Brownies</b>
	8.00pm - 10.00pm In winter	<b>Mixed Badminton</b>
	7.00pm - 11.00pm 1st Wednesday of month	<b>Accordion &amp; Fiddle Club</b>
Thursday	10am - 12 noon	<b>Coffee Morning</b>
	7.30pm 2nd Thursday Sept to May	<b>WRI</b>
Friday	10.00am - 11.00am	<b>Chair Exercise</b>
	7.30pm - 10.00pm 2nd Friday Sept to April	<b>Community Cinema</b>

To check on the Village Hall bookings, go to the village website  
[www.glenfarg.org](http://www.glenfarg.org)  
 and look at the on-line calendar under 'Hire the Hall'



# Covid Joint Statement

During these unprecedented times, we as your four Ward Councillors—Cllr Mike Barnacle, Cllr Callum Purves, Cllr Willie Robertson, and Cllr Richard Watters—take this opportunity to share our deep appreciation for the work that so many of you in Glenfarg are doing in response to the threat that the Covid 19 virus is imposing on us all.

Established community groups such as Broke Not Broken and the Day Centre are rising to the challenges posed by this pandemic. While demand for their key services has rocketed, a number of their regular volunteers who are classed as vulnerable and so are unable to provide their usual help.

**Arngask Church** has setup a 'Blether Line' for anyone in need of a friendly blether during lock down.

**Glenfarg Community Council** is using their invaluable local knowledge to support members of their communities during lockdown by helping residents with prescriptions, shopping, and any other help they can provide.

**Kinross and District Men's Shed** are using their 3D printers to make Face Shields for our frontline workers, helping to protect all our lives not only in this area, but further afield.

All these groups of volunteers are playing an important role in making sure that we are protected and looked after during this stressful and difficult crisis. If you require any help or assistance, the contact details for the groups can be found in this month's Newsletter. Or you can call one of us and we will be sure to get the right help to you.

Key workers have also stepped up, ensuring that the key local services that we all depend on continue to be operational.

We all appreciate the expertise, dedication, and bravery shown by NHS staff and other Health Professionals as they work through this difficult and dangerous situation.

Overall, Glenfarg has provided a community response to be proud of, helping our residents during this crisis and ensuring that all our needs are provided for.

Our thoughts go to families who have suffered a bereavement during this time.

As we all play our part—even by just staying home—we continue to protect our communities and we continue to save lives.

Cllr Mike Barnacle – Cllr Callum Purves – Cllr Willie Robertson – Cllr Richard Watters

# Church News



## Dear Reader,

I was invited to attend a small but very special anniversary celebration this Summer in the garden of one of my parishioners. It was called 'Black Tot Day' and commemorated fifty years since the Admiralty abolished the issuing of a daily tot of rum to its sailors. Our host joined the Royal Navy just four days before the tradition ended, so he didn't enjoy his 'grog ration' for too long, but he certainly made up for it on the day of our party: high strength 'Pussers' rum was flowing and enjoyed by all. Amongst the company were former service men and women and unseen by us, we were joined by countless sailors both retired and serving, at sea and on land the world over. On the button, bang-on 12.30pm on 31<sup>st</sup> July we raised our glasses to Her Majesty the Queen and a little piece of Naval history was celebrated in time-honoured style. Sadly, by the time I joined my first ship, the issuing of a daily rum ration was long over and the signal to 'splice the mainbrace' was confined to high days and holidays - like the birth of a new royal baby or a royal wedding.

The Navy, like so many other old institutions, has lots of traditions and practices which make it the special thing it is. I am always amazed at how the Church and the RN are similar in so many ways. Both have been around for a long time, both have their own language and both value and cherish their long held customs – which can seem very strange indeed to the uninitiated. Despite this, I enjoyed many of my 'salty'



ways of doing things as a Naval Chaplain and was sorry to leave them all behind. Here on land, customary behaviours and long held traditions have suddenly had to be 'put on hold' by the effects of Coronavirus and our whole way of life (in every respect) has changed. These strictures imposed upon society will, in time, be lifted and we fervently pray for the day that this will happen: as I write this, many aspects of lockdown are already being eased by the Scottish Government. In the meantime, we soldier-on. Perhaps, like me, you wonder if we will ever get back to what we might call 'normality'. No doubt, certain traditions will be lost and others will change and be adapted. Lovely though it was, an issue of high-strength rum on the ocean wave and on a daily basis really didn't fit-in anymore, with the requirements of a more technically-exacting and professionally-minded Senior Service. So it will be with us: undoubtedly, changes ahead will be accepted and embraced and we will move on, albeit slowly and cautiously. As a result of Covid-19, our ways of daily living, our recreation and our worshipping may be forever amended and altered. Like old sailors, we might all look back on how things were with a pang of regret but best, I think, to look confidently ahead. Like it or not, we will have to move with technology and employ more modern techniques to achieve our goals - even as far as the Church is concerned. After all, we are all together in this vessel and we have each other for shipmates. Fortified with God's promise that he is with us always and we have nothing to fear, we raise our glasses and pray for a new and brave future for us all: 'to fair winds and a following sea'.

With my prayers and best wishes.

Sincerely,

**Rev Stan August 2020**

### **Abernethy & Dron & Arngask Church Re-opening News**

Although both Abernethy and Arngask churches currently remain closed, the Kirk Session and Minister are working hard to find ways to re-open. Due to the strictures imposed by the Covid-19 regulations this is proving to be a challenging but ongoing task. It is an ever-changing situation and therefore difficult to predict. Meanwhile, our worship continues every week which you are most welcome to join. It can be accessed through our ADA Facebook page by going to Abernethy & Dron & Arngask Church. Here you will also find the most up-to-date information regarding virtual services and the latest news regarding the physical re-opening of our buildings.

# Indoor Play

*Light and warm with a lovely café  
Supervised play available to allow  
parents to relax, work or workout*



*www.treehouseandgym.co.uk*

*@treehouseandgym*

*info@treehouseandgym.co.uk*

*1st Floor Jamesfield,  
Abernethy*



*Gym*



*Studio*

**LES MILLS**



## 2 BEDROOM APARTMENT TO LET IN PAPHOS CYPRUS



Lovely 2 bedroom garden apartment to rent.

About 3km from Paphos Harbour and only 900m from the sea.

*Main bedroom has a big double bed, plenty of cupboard space, and a patio door leading to a small garden, with patio table, chairs, and parasol for you to dine "al fresco".*

*Second bedroom has 2 single beds, and, again, plenty of storage.*

*Fully furnished and very comfortable, with air-conditioning, excellent kitchen area (fridge freezer, washing machine, oven and hob etc)*

*The bathroom has WC, bath and "over-bath" shower.*

*Plenty of towels, bedding etc all in apartment, so no need to carry that extra luggage. 2 communal pools, plus a children's pool, set in lovely gardens, and close to bus route and local tavernas. Nearest taverna is less than a 5 minute walk away! Only 20 minute drive from Paphos airport and collection can be arranged.*

*Realistic rental rates, as I am only looking to cover ongoing bills and expenses.*

**For more information contact**

**Lawrence on 07836 578563, or e-mail [lozzenge2@gmail.com](mailto:lozzenge2@gmail.com)**

# Glenfarg W.R.I.



## Thon Auld Wifies? Or Thae Cool Cats?

The Editor has asked me to pen a wee article about the SWI (affectionately known as “The Rural”) because, like so many other organisations, we have been unable to meet since March, so there have been no competition results, or other news to report. The Scottish Women’s Rural Institute was formed in 1917 by Catherine Blair.



*Eryngium “|Catherine Blair” with  
roses, carnations and lavender*

Formed in 1918, and having had a two year break during World War II, Glenfarg Rural was due to celebrate its Centenary in 2020.

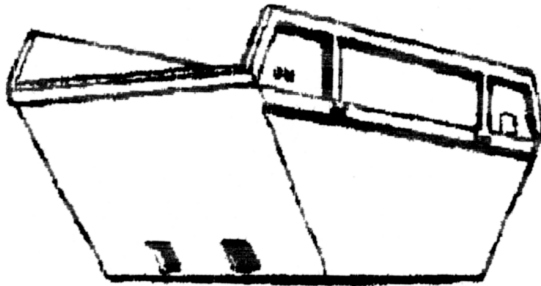
This will be rescheduled at an appropriate point. Rest assured our members locally, district wide and nationally, have not been idle during lockdown! Despite an age profile tending generally towards the more senior end of the population, they have embraced technology, set up new Facebook pages for specific interests and arranged Zoom meetings.

When we are eventually able to meet once more, we invite any lady aged 14 upwards who has an interest in learning, sharing or teaching skills, be they traditional or modern, in cooking, baking and crafts, to come along and join us. Our invited speakers each month are from a wide spectrum of society and we are always learning something new.

Personally, what I have enjoyed most about the Rural, apart from making many new friends, has been the temptation to try new things, especially ones I thought I could never do! The monthly competitions (non-compulsory) are a bit of fun for competitive folks, as well as an opportunity to try something new, or show off an existing skill. Entries involve a craft item, a cookery item and a flower of the month.



# Binn Skips



Binn Farm • Glenfarg • Perthshire  
PH2 9PX

**Tel. 01577 830 833**  
Fax. 01577 830 488

# Glenfarg Village Hall News



We are pleased to announce the appointment of a new Hall Keeper, Isla Craig. Isla lives in Glenfarg having moved here recently from Crianlarich. Together with the Board of Trustees, Isla is looking at the detailed arrangements for the re-opening of the Hall. It is planned to make the Hall Covid-safe and available for bookings from possibly the middle of September. Please contact Isla via the email booking address at: [glenfargvillagehallbookings.com](mailto:glenfargvillagehallbookings.com) to request your future bookings. These will need to comply with the prevailing government rules and the detailed conditions for hiring the hall which aim to ensure the health and safety of all hall users.

You may have seen some builders from Webster Development at the hall recently. Following lockdown, they have now commenced work to convert the Schoolhouse from a dwelling to community use. A new doorway now links the hall with the house and we are hopeful that Webster Developments will be able to continue their work so that the Glenfarg Community Centre (which integrates the Schoolhouse together with the hall) will soon become a reality. Once this work is finished there will be work to do to furnish and decorate the building and tidy up the garden. We will need lots of volunteers in due course, and will let you know how and when you can help.





Ding Dong,

AVON calling

and still going strong after more than  
40 years in Glenfarg!

You can have a wide range of cosmetics, toiletries, perfume, gifts  
and much more delivered to your door:

just go to [www.janmakeup.co.uk](http://www.janmakeup.co.uk),

place your order, select 'representative delivery' and I will deliver it  
at no extra charge.



## FERRIER & MACKINNON

OPTOMETRISTS

We've been proudly delivering excellence in  
eyecare to the local communities of **Glenfarg**,  
**Milnathort**, **Kinross** and for over 25 years.


Book your **FREE NHS** eye test with  
your trusted, local optician

[www.fmoptom.com](http://www.fmoptom.com)

74 High Street  
KINROSS  
01577 864009

27/29 Chalmers Street  
DUNFERMLINE  
01383 721502

Practices also in COWDENBEATH, BURNTISLAND,  
INVERKEITHING, NEWPORT-ON-TAY and LOCHEE

Find us on 

# *Recipe for Apricot Roulade*

*(This recipe makes two roulades)*

## **Ingredients:**

8 ripe chopped apricots, kernels removed  
5 large eggs, separated  
4 oz plus separately 1 oz, Caster Sugar  
3 tablespoons plain flour  
1 teaspoon Vanilla Extract  
4 oz Grated Marzipan or Almond Paste  
50g (or more if you like) of Flaked Almonds  
300g tub of Crème Fraiche  
4 tablespoons Amaretto Liqueur (optional)

## **Method:**

Set oven temperature to 160 deg C fan. You will need 2 swiss roll tins.

Put a tiny blob of oil or smear of butter on the middle of each swiss roll tin. Cover with a sheet of non-stick baking parchment, then spread butter lightly over the whole surface. Scatter the flaked almonds over the surface as evenly as you can.

Whisk the 4 oz sugar plus the egg yolks, till pale and fluffy. Stir in the vanilla extract and grated marzipan. Sift over the flour and stir in gently till just incorporated.

Separately, whisk the egg whites until stiff but not dry. Using a metal tablespoon, put a quarter of the whisked egg whites into the other mixture and stir gently – this loosens the mixture. Then carefully fold the remaining egg white in, using a figure of eight stirring motion, to retain as much air as possible.

Divide the mixture between the two tins and smooth the top, ensuring mixture goes right into the corners.



Bake for sixteen minutes then transfer to a baking tray, leaving the sponges in the tins. Cover with a sheet of non-stick baking paper, then a damp tea-towel and leave to cool.

When cool, remove the tea-towel and the non-stick baking paper, trying to leave the top of the sponge intact.

Not as easy as you might think.

Lay two pieces of non-stick baking paper or greaseproof paper on the work surface and dust over the remaining 1 oz of caster sugar. Turn the sponges on to these sheets and carefully remove the backing paper.

Drizzle two tablespoons of Amaretto Liqueur over each roulade.

Spread half of the crème fraiche over each sponge, leaving about half an inch bare at one of the short ends. Scatter over the pieces of apricot as evenly as possible, again avoiding about half an inch at the short end.

Now, holding the non-stick paper edge, carefully start rolling the sponge (not at the end you have left bare), keeping the paper round it as you go, until you have quite a tight roll, ending at the bare end. There should be about an inch or so of paper sticking out beyond that. Tuck that in, and roll all of the paper round the roulade. If you are going to serve it straight away, keep it, in the baking paper, in the fridge for about half an hour. If not, wrap clingfilm round the whole thing and freeze, or keep in the fridge for no more than a day or two.



# Glenfarg Folk Club

"The show must go on"



Whilst we are no longer based in the village the club is still thriving and managing to keep going through these strange times. The club has met weekly for over forty years and we are still doing that now, albeit virtually.

We have recently settled into the monthly pattern of a Gathering; Sing-around; Guest artiste, Sing-around. These are conducted via Zoom or Facebook Live and attract a minimum audience of 25 or so. There are challenges with Zoom to get good audio quality so most guest artistes choose Facebook Live.

Grant Maloy Smith was our most recent guest artiste and performed from his studio in California. Grant is a Billboard top 10 recording artiste, singer, songwriter, musician and actor. His American roots music is a blend of old country, bluegrass and folk. During his concert we could interact with comments and during songs he would read and speak about them. At the intermission our members entered a Zoom chat and Grant joined in to chat and "meet" us. All we missed was getting his autograph!

In April we traditionally hold our annual Folk Feast and yes, we still held the 42<sup>nd</sup> event via Facebook Live. Hosted by Dave Spittal who is a good friend of the club and a talented performer, it was broadcast from Lima, Peru, where he lives. Spread over three days it brought endless fun and enjoyment to many people from around the globe. Guest artistes included Jez Lowe, Christine Bovill, The Quiggs, Duncan McCrone and Cy Jack, Marieke Mc Bean (Rallion) and Eddie Walker. What a small world we live in.

Moving forward are programme is:

August 31<sup>st</sup> – Gathering Concert with Ian Simpkins, Mike Dow, Iain Young and Aileen Carr. Each artiste performs for twenty minutes.

September 7th – Sing around. A chance to join in or just listen.

September 14th – Edwina Hayes in concert,

September 21st – Sing-around

September 28th -Gathering Concert, names to be advised.

We have also announced our 43<sup>rd</sup> Folk Feast to be held at Backstage, The Green Hotel Kinross. The dates are Thursday 18<sup>th</sup> to Saturday 20<sup>th</sup> March 2020. All we need now is for the event to be allowed to progress. So, it is fingers crossed, "The show must go on".

Why not visit [www.glenfargfolkclub.com](http://www.glenfargfolkclub.com) for more details, here you can find out which medium the event will be broadcast over. Please member, we are not a closed shop. Everyone is welcome.

Philip Ponton, club secretary. [info@glenfargfolkclub.com](mailto:info@glenfargfolkclub.com)

---

**OPEN**  
**SAFELY!**

Café

BIBA

22 King  
Edward St,  
Perth  
PH1 5UT

**We've had a Makeover**  
**Pop in when**  
**you're in Town!**

**20% Discount Monday - Friday**  
**for Glenfarg Newsletter Readers**

# Glenfarg Improvement Team (GITS)

The period of lockdown has been strange to say the least for the guys, with restrictions on numbers gathering together and issues obtaining materials for some of the smaller individual jobs. However in recent weeks we have managed some socially distanced tasks which included painting the GDIB garage and restoring the dilapidated benches from Elm Row. The garage painting was done by allocating a panel per GIT and the whole task was completed in just over an hour and of course the usual banter was able to take place.

The task of restoring the benches was a whole different ball game. First



Douglas transported the benches to John who dismantled them and disposed of the rotten timbers before taking the frames of one to Brian and the other to Eric. Brian and Eric in their own garages then had the enviable (not) task of cleaning down the frames and painting them. The new timbers and bolts were acquired through a P&KC purchase order and Davie Meldrum very kindly finished the timbers in his





thickness planer creating a good finish for painting, a task undertaken by John. Thankfully some nice weather allowed the paint to dry reasonably quickly as 5 coats were applied to ensure a great finish.

The painted timbers and bolts were delivered to Brian and Eric for the final assembly before the benches return to take pride of place again in Ash Grove.



# JOHN ANDERSON

FISH  
MERCHANT



**In Glenfarg and Duncreevie  
Every Wednesday Morning**

**On the van**

Haddock, Smoked haddock, Salmon, Smoked salmon, Mackerel, Kippers, Rainbow trout, Seabass, Cod, Hake, Lemon sole, Pickled herring, Eggs, Artisan breads, Seasonal fruit & vegetables. Lobster & Crab pre-order.

# John Anderson (Fish Merchant)



I have recently taken over from Isobel Dillon on the van. She ran it for 10 years and her uncle Gilbert was on the van for 30 years before her. Isobel had to retire due to ill health and approached me to purchase the business

I have been a chef for 25 years. Starting out at a local restaurant then progressing through the ranks to become an executive chef at the House restaurants in St Andrews. I was there for 15 years until the opportunity to take over the franchise of my local golf club and restaurant in Anstruther. The restaurant had grown a good reputation and I was able to enhance it in the 8 years I was the proprietor.

Why did I leave to take over the van? I have an 18 month old daughter and my wife is pregnant again with our second child. The van allows me to have weekends off to spend quality time with the children that the restaurant wouldn't allow me to.

My father and brother are also fish merchants so it runs in the family. My father was a skipper of a trawler out of Peterhead as was his father before that. Fishing runs in the family. So I have a good knowledge of where our fish comes from and a fair idea of how to prep and cook! We also have a small day fishing boat in Anstruther harbour catching our own lobsters and crab.

# Brian Lascelles



The death was recently announced of former Glenfarg resident Brian Lascelles. Along with his wife, Maggie, they lived in Bank House on Ladeside. It was their work on turning the former coal yard and associated land into Glenfarg Green and their subsequent decision to gift it to the community that assured his memory will not be lost in Glenfarg.

Brian Lascelles had a long career in the business community in Scotland, best known for his time with John Menzies (Holdings) Ltd. During his time with the company he was instrumental in turning it away from being a High Street seller of books, magazines and newspapers and into wholesale international couriers and freight forwarders and from there expanded into airport ground handling. Brian had seen how the world was changing and took Menzies into a new direction so that, now, it is pure-play aviation business.

Born on 5<sup>th</sup> September 1926, Charles Brian Lascelles was a member of the family of the Earl of Harewood.

His retiral in Glenfarg was largely devoted to his garden. The large garden at the rear of Bank House was part of Scotland's Garden Scheme and demonstrated the dedication that he and his wife had towards it. In the 1990's the land that is now Glenfarg Green was a wasteland. The coal yard that was part of the land had long gone. Then the villagers heard that the land was about to be sold to a property developer for housing. That's when Brian moved to purchase the land and to stop such a development.

Over the next 6 years he and Maggie devoted their lives to turning the land into Glenfarg Green. They created the pond, they planted trees (many of which are specimen trees) and shrubs. They turned a wasteland into an area where people could walk, relax and enjoy nature. It was their garden, but it was open to everyone.

When, in 2008, Brian and Maggie decided to move to their property in Highland Perthshire, Brian contacted the author, as Chair of Glenfarg & Duncrive in Bloom, and invited the organisation to take over ownership of the Green. With GDIB not being able to acquire and hold property, I suggested to Brian that an approach to Perth & Kinross Council to assume ownership, with GDIB managing the Green might be the way to go. And this is what happened. The Green is held by PKC as an inalienable community asset and is managed in partnership with GDIB.

The community owes Brian Lascelles enormous thanks for what he has left Glenfarg & Duncrive. DMacK

*Brian's family held an outdoor funeral at Straloch and he was buried in a wicker coffin at the recently dedicated burial ground at Millenium Wood.*

# GLENFARG COMMUNITY CINEMA



The committee has been meeting on Zoom and in the garden to try and work out the best way forward for the Community Cinema.

The opening of the hall is the first problem. When this is going to happen is dependent on quite a few variables and even when it does open what will be the conditions of our licence to screen movies.

Here is what the chair of the trustees of the hall has said:

*"The Village Hall remains closed at the present time owing to Covid restrictions. However, the Committee is very conscious that many members of the community will be missing the opportunity to meet each other and take part in activities that could perhaps be held in the Hall provided the necessary safety measures are in place. Therefore it has been looking very carefully into how and when the Hall might safely be made available for hire once again and for what activities. Once this has been settled a notice will be published on the Grapevine and on Facebook with more information"*

We have to charge admittance money to pay for the licence to show the film and having a reduced audience size would result in running at a loss. This has to be taken into consideration.

**Good News.** In the past the Cinema Committee has managed a surplus from ticket money and this has been ploughed back into the facilities of the hall. The latest use of the surplus is to part fund acoustic panels which will soon be installed on the hall ceiling. This will make a considerable improvement to the acoustics in the hall. The movie experience will be more enjoyable and other social functions like the pop-up pub will find this an asset.

**In the meantime,** with autumn approaching and the nights drawing in, we thought that people may start to feel more isolated. What about having a 'virtual cinema', to be held on the nights when the community cinema should have been happening? The idea is that we will all watch the same film at the same time in our own homes. There would also be the opportunity, probably before watching the film and afterwards, to meet up on Zoom for a discussion. We were thinking of starting this in October. If you think this is a good idea and would like to join in, please contact Doreen.

Email [ashton.doreen@yahoo.com](mailto:ashton.doreen@yahoo.com)

**Looking forward to the next season** we are still asking for suggestions for movies to show at the cinema. At the risk of repeating ourselves the Community Cinema is open for everyone. It is not a club and you do not have to be a member, just buy a ticket and you will be made welcome.

Your views and comments please, there are some prompts below to help you.

- What is your favourite genre?
- Is there a specific film or films you would like us to show?
- Would you come to a film with subtitles?
- Do you like the format of a halftime break?
- Do you like the 'Special' events where food is involved?
- What about "sing-along" films?
- Do you have any other suggestions - all are very welcome!

Any input, large or small, would be really appreciated by us.

E-mail [philip.ponton@btconnect.com](mailto:philip.ponton@btconnect.com)





# Glenfarg Village Store

Here for more than the occasional  
snow storm or the odd pandemic!

## **Opening Hours**

**Mon. to Fri. 8am to 7pm**

**Sat. 9am to 5pm**

**Sun. 9am to 3pm**

**[glenfargshop@gmail.com](mailto:glenfargshop@gmail.com) 01577 830823**



# Glenfarg Tennis Club



When people are losing their lives and suffering debilitating illness, I don't want to be flippant about any aspect of the virus. If anyone has been a victim, we send you our deepest sympathy. For things concerning Glenfarg Tennis, however, Lockdown couldn't have been kinder.

New club members come tumbling in from all directions and our courts are in much greater demand than heretofore. Even better than that; lots of them are young!

We continue to discuss what would be best for the courts and have come up with a novel solution. We hired a carpet cleaner from Kirkcaldy who arrived with a superduper vacuum cleaner and shampoo system in the back of his transit. We came up with the same results we've had for the last couple of seasons at about a third of the price. Good news all round.

So, the first day we were allowed to play full tennis from any household, we had 10 (ten) women on beautifully green courts on a Monday night. It was fantasy land for the committee who've been trying everything (except Covid) for the last several years with little or no improvement to membership.

So in the coming months, we look forward to a really competitive Club Championships, perhaps not accompanied by a well attended social and prizegiving dinner quite yet. We can't be too optimistic. But the future suddenly looks a bit more rosy. Committee members under fifty. An on-line booking sytem for court use. Bank account that allows us to do things to the club and clubhouse without putting out the begging bowl. And Alex is playing well enough to finally win the men's championship. Is that too much to hope for?

Tim Corcoran

# Wallace Park Developments

This has been a productive time for the Friends of Wallace Park committee. Despite the lockdown, we have been able to make some improvements. And P&K Council's Greenspace has been busy too.

## Play area

At last the new play area is open and the kids can have some fun, instead of peering wistfully through the fence. The new equipment has been designed so that all ages have something suitable to play on. And the roundabout, which is already proving to be a huge success, is also accessible to those with disabilities.

## Sun Clock

Painting in the roman numerals and months of the year, so that they are more visible, is proving to be a time consuming occupation. However, we are just managing to keep ahead of local time. A few of the Months and the British Summertime arc are complete and we hope to finish the job before the clocks change!



## Path

Our fundraising for the extension to the path has been successful and you may have already seen the contractor at work in the park. It is expected that work will take around 4 weeks. Our thanks go to EB Scotland, Gannochy Trust and the Community Environment Challenge Fund for their support. The funding from EB Scotland is through a Landfill grant. Our proximity to the Binn landfill site means that we qualify for this, but the Binn Eco Park company has also been most supportive towards the whole project and is providing free 'fill' for the path from their recycled material.

## **Picnic Area**

We have also acquired the funds necessary to build the picnic area and put up a new notice-board. Picnic benches will be made from recycled material, and the notice-board will keep you up to date with all our plans.

## **Fitness stations**

Our fundraising towards three fitness stations is on-going with around half the necessary funds in place. This is our next priority, but it will be followed by fundraising for the Ball Park and the Zip Wire.



## **Tree & Shrub Planting**

The Woodland Trust supplied us with 400 saplings earlier in the year but the lockdown put a halt to our planned planting. Many thanks to Douglas for looking after them these last few months. They are now looking like little trees rather than sticks! We cannot use them all in the park as the shrubs with thorns are not appropriate for this space. However, that still leaves us with several hundred to be planted. So we will need lots of volunteers! We are planning a Planting Day for early October. We hope that the Ranger will be working with some pupils from the primary school on the Friday, and we will be asking the rest of the community to turn out on the Saturday to plant their own trees. So watch the Grapevine for details nearer the time. In years to come, when walking through our beautiful park, you will be able to say "I planted that".



# Beavers, Cubs, Scouts and Explorers

Scouting, like everything else has been restricted during covid 19. Beavers, cubs, scouts and explorers have been self (or parent) motivated to complete challenges sent by the leader team. We've seen photos of scouts camping in various gardens, building dens and cooking. One parent has sent us a video diary of their cub completing the indoor thistle award (technical skills beyond me). One explorer has managed to complete his silver Duke of Edinburgh (apart from the expedition) which is a huge achievement.

The leader team are working hard to return to face to face scouting and we are now getting ready for small outdoor meetings. The scout association nationally will determine when we are allowed to meet indoors again.

Before we can meet outdoors all leaders have to complete additional training and the scout group committee have to do training too so they can approve our written activity risks assessments before passing them up the chain for sign off.



We are planning to have outdoor meetings in September once we have jumped through all these hoops.



# ***Earnside***

***U.K. & Continental  
Travel***

Tel: 01577 830360

E mail: [info@earnside.com](mailto:info@earnside.com)

Website: [www.earnside.com](http://www.earnside.com)

# Farming In Lockdown

How has it been three months since I last put together a farming update for the Newsletter?! I had really hoped to say a lot had changed in terms of Covid and life getting back to normal, but I'm not sure I can. The 'new normal' has seen a few changes for me personally, however luckily for my family the running of the farm has still remained pretty similar to how everything was pre pandemic.

For us, on the farm, the last three months has seen lots of different jobs taking place. The bulls went out to the fields with the cows for 9 weeks which will hopefully mean we will have 45 pregnant cows all due in the middle of June next year.

Shearing the sheep is a big job we do every year around June, all the sheep come in to get their fleeces taken off to keep them cool in the warmer months and to prevent the risk of parasitic infestation and disease. However where farmers used to make money from their wool this is no longer the case.

Last year (this year will be much the same) it cost us more to shear our sheep than we will be paid for the wool. Last year we had 1400 sheep to shear, it costs us £1.30 a sheep, so that totalled £1820 to shear our sheep last year. The sheep produced 2540kg of wool which is about 2kg of fleece for each sheep. We get paid 64p per fleece so last year we got paid £810. That means we make a loss of £1020 or 66p per sheep! Which seems a massive loss considering what a fantastic, natural and renewable product wool is!



Me having a shot at shearing

We got our first crop of silage harvested which will be this winter's feeding for our cattle and the recent damp and warm weather has meant the grass hasn't stopped growing. It's almost ready to take a second cut off, which we will put into bales to feed the cattle and turn into haylage to feed my horses.



Silage being lifted in July

We have sorted through all of the sheep and lambs. Many of our older ewes have been sold to make space for new younger ewes that will replace them and help us maintain a healthy productive flock. We have sorted through all of this year's lambs, selecting the best ones to stay and join the flock for breeding in future years with the rest getting sold to other farmers or ending up on the shelves of Morrisons.

I have tried to keep myself busy during my last few months on furlough and decided to sign myself up to help our neighbouring farm rogue this year's potato crop. For anyone who doesn't know what roguing is, it's walking through fields of potatoes to spot any incorrect or unwell plants within the crop, and trust me it sounds a lot easier than it is!



You are looking for different shades of green on leaves amongst lots of green leaves and walking well over 10 miles a day doing it. After 5 weeks of this I ended up with some fairly questionable tan lines and a much improved level of fitness!

One big change for us has been the re-opening of our Cross Country. In a normal year we would have been open from March, running multiple competitions and training days for riders across Scotland. Although we are still, as yet, not allowed to run competitions, it has been lovely seeing riders back training. I'm sure many of you who walk around the Arngask loop will have seen horses and riders out enjoying themselves again.



Our Cross Country open and proving popular

I hope you are all keeping well and enjoying finding what your 'new normal' is too!

Emma Cheape

# GLENFARG AND DUNGERIEVE IN BLOOM

Where to start? A summer like no other. All change. Will we, won't we, can we or can't we? Yes all these required decision making and solutions found.

However our volunteers have stepped up to the mark before and this summer has been no exception. OK you may have noticed that the displays throughout the village have not shared similarity but what that has created is amazing fabulous individual displays. Thanks to the numerous planter adopters the colours, the ranges of planting, the fun and the involvement of children and adults alike has, in my opinion, given us one of our best years yet.

Normally as I write the article for the September Newsletter, GDIB would be up to their eyes in preparation for local and national judging visits. This year's break from that stress of trying to please certain judges who only appreciate the smell of new paint has been a huge relief and has given a well earned rest for the hard core volunteers of GDIB. Needless to say there has still been tasks carried out by GDIB by individuals e.g mowing the South verge and jobs where a sole individual can operate a piece of equipment as there could be no sharing of equipment.

Sadly however, very few residents took the opportunity of being at home during lockdown to clean up the pavement adjoining their properties. With no council pavement sweepers I had hoped that Glenfarg residents would help keep our village beautiful. Remember it's never too late to start and we can have a beautiful village this autumn if we all muck in. This should take no more than 10 minutes of your time and you will feel good when you stand back and see the difference you have made.

Next Newsletter will feature a photo special of you all out there with your brushes - please.



Kate Armstrong

## SUPing in Assynt

(Stand up paddle boarding)

I had previously tried stand up paddle boarding on the lake at Canberra and on a lagoon at Jervis Bay near Sydney. On these occasions I had been lucky enough to be the only person in the class so had one to one supervision in the sunshine of Australia.

As a retirement gift my colleagues gave me a voucher to buy something for outdoor activities. I took a deep breath and bought my own stand up paddle board so I could continue the activity in Scotland. Robert insisted that I also got a buoyancy aid as I would be going on my own.

The first challenge was inflating the paddle board which after trying to inflate in the house I discovered was bad for my back. I solved this by getting Robert to hand pump it up as using an electric pump running off the car battery would take hours.

My first solo outing was early morning at Achmelvich beach in the drizzle, a far cry from the beating sun of Australia. Instead of shorts and t-shirt I was wearing full length wet suit and a woolly hat.

I did remember to start by attaching the dagger board and ensuring I was attached to the board by a leash before pushing off from the shore and kneeling up on the board. I rapidly discovered that even if I had the nose of the board at right angles to the waves there was no way I was going to be able to stand until I was past the surf and further off the shore. Once on my feet I discovered that I was further from the shore than I really wanted to be and even though it was just before high tide I could find myself well out if I wasn't careful. The wind wasn't





helping either but eventually I was heading in a direction I was comfortable with. In ideal conditions you paddle the 3 strokes on one side before switching to the other. I ended up paddling at a ratio of 5 to 2 to get the direction I wanted to go in.

Eventually I was across the bay and headed in for the shore. I'd gained a lot of confidence and was standing up when a wave caught the back of the board and tipped me off. The water was cold as I waded to the shore.

Undeterred I set out again, determined to paddle back across the bay. Once out past the surf I watched the rollers and turned the board between them and set off for the other side. I discovered that my progress was severely hampered by standing on the board as I acted as a sail pushing the board the wrong way. Eventually I had the sense to reduce my surface area by kneeling down and progress was much better. I almost reached the shore this time without incident until the wave flowed back to gather for the next wave and my board's forward momentum stopped dead but not mine and I was nose down on the board. By my fourth outing at Balnakiel beach, Durness, I had gained a lot of confidence and was managing to read the sea much better. I would drop to my knees for the big waves which if they hit the board broad side would tip me off when standing. I was successfully launching and beaching the board and was fairly relaxed paddling from end to end of the bay. When I was paddle boarding the beaches were deserted and there were no other people in the water. The board only travels at walking speed so Robert was able to follow on the shore. Both beaches are shallow and although the water was crystal clear I didn't see any fish, unlike the stingrays I had watched from the board at Jervis Bay.





**A Glenfarg based dog exercise service offering dog walking  
and for more energetic dogs, jogging and biking sessions**

call Yvonne on 07585 060 663 or email [info@tailsandtrailsglenfarg.com](mailto:info@tailsandtrailsglenfarg.com)  
visit us at [www.tailsandtrailsglenfarg.com](http://www.tailsandtrailsglenfarg.com) or find us on Facebook & Instagram

## **POOCH PERFECT DOG GROOMING SALON**

**Professional dog grooming service  
with over 6 year's experience**

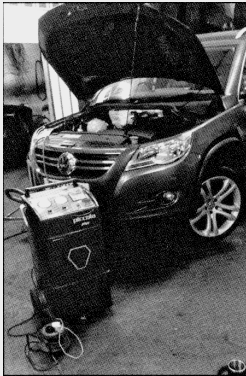
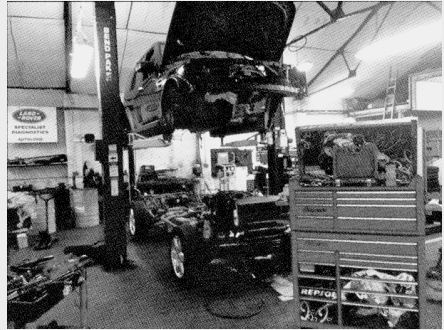
**The Gables, Main Street  
Glenfarg PH2 9NT**

**01577 830741  
[poochperfect741@gmail.com](mailto:poochperfect741@gmail.com)**



# Glenfarg Garage

**Advanced Diagnostics  
Servicing & MOTs  
Tyres & Wheel Alignments  
4 x 4 Specialist**



**All Vehicle Repairs  
undertaken including  
Air Conditioning  
Servicing & Repairs**



**Email [office@glenfarg-garage.co.uk](mailto:office@glenfarg-garage.co.uk)  
Tel: 01577 830633  
Main Street, Glenfarg, PH2 9NU**



# VETERINARY SURGEONS

**CAMERON & GREIG MRCVS**

*'Ardmhor', Stirling Road, Milnathort KY13 9XR*



*By appointment only*

Monday - Friday      9 - 10.00am  
   2 - 3.00pm  
   6 - 7.00pm  
Saturday                9 - 10.00am



Telephone: Kinross 863 494  
Website: [www.cameronandgreigvets.co.uk](http://www.cameronandgreigvets.co.uk)

*Large and small animals  
24-hr emergency service*

## *Silver Lining Hair Studio*

*Ladies, Gentlemen, Children, Students, Seniors*

*Bridal Hair a Speciality*

*Kebelo ADVANCE Specialist*

**Upstairs at Jamesfield Centre, (Lift available)**

**Perth Road, Abernethy, KY14 6EW**

**Telephone: 01738 851110**

**(Walk In Customers Welcome)**

**Send a message via Via Facebook or Instagram – typically replies  
within an hour**

**[www.silverlininghairstudio.uk](http://www.silverlininghairstudio.uk)**

# GLENFARG COMMUNITY COUNCIL

## Glenfarg Community Council Monday 4th May 2020 Agenda and Business meeting via email

### Welcome

**GCC Chair CClr Ponton thanked her team for their attendance through email and expressed her gratitude to the owners of the Village shop, to all villagers and many others for their valued help at this troubled time in our community.**

**Attendance through email:** CClr Ponton, CClr Pilmer, CClr Fraser, CClr Horsman, CClr Duncan, CClr Warder, G.Christie Minutes Secretary

**1. Apologies** - none to report due to Covid public gathering restrictions

**2. Approval of last business meeting Minutes.** Proposer CClr Pilmer and Seconder CClr Fraser

### **3. Action Points update:**

Crash barriers feedback carried forward to next Business meeting. *Action PKC Cllr Purves*

Greenbank Crescent feedback carried forward to next Business meeting. *Action PKC Cllr Robertson*

Footpath from Ladeside to Ash Grove feedback carried forward to next Business meeting. *Action PKC Cllrs*



# ANDREW MILLER FIREPLACES



*Bespoke & personal service*

**SUPPLY or SUPPLY & INSTALL**

**GAS / ELECTRIC / MULTIFUEL / WOODBURNING STOVES**

**GLASS / GRANITE / SLATE / TILED HEARTHS TO SUIT  
STOVES or FIRE SURROUNDS  
GAS / ELECTRIC / FIRES / SUITES**

**LARGE SELECTION OF VARIOUS TIMBER and PAINT FINISH  
FIRE SURROUNDS / BEAMS and SHELVES**

**SHOWROOM by APPOINTMENT  
27-29 WESTERLOAN  
MILNATHORT  
KY13 9YH**

*and now at*

**THE CONSERVATORY JAMESFIELD FARMSHOP & KITCHEN  
ABERNETHY**

*Any queries do not hesitate to contact  
Email: [millerfireplaces@btconnect.com](mailto:millerfireplaces@btconnect.com)  
Tel 01577 862173  
Mobile 07870 284868*

## Festive Lighting

Following the Council decision in January 2020, eight new light column mounted Christmas festive lights have been ordered from Lite Ltd at a cost of £1,910.88 excluding VAT. This covers the lights, fixing brackets and delivery.

CCllr Fraser asked the supplier to hold back delivery for the time being as the Council depot is currently closed. It may be that we will have to get these delivered to Glenfarg as a temporary holding station and that the Council will collect them from us.

In addition, to the cost of the light fittings, there will be a charge of £800.00 for the Council to install commando sockets on each column. Update to follow at next Business meeting. *Action CCllr Fraser*

## Glenfarg Website

A quick recap. The developers of the new apartments in the village offered the services of their marketing company, Reflex Blue Ltd, to provide a mobile friendly update to our Glenfarg.Org website.

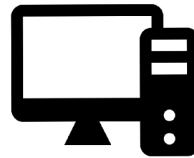
Following two meetings with the web site designers and associated interested parties (J Watson and B McPherson) it was decided that moving to a completely new website was probably a step too far in one go given the wide ranging sources of information and functionality of the existing site. Therefore, it was agreed that Reflex Blue would update the existing website to provide a modern version. This would initially sit alongside the existing site to allow us to road test it prior to a change over.

Reflex agreed to bring their web designer to the next meeting to thrash out the detail however, the meeting had to be cancelled due to the Covid 19 restrictions. Reflex Blue subsequently agreed to design an initial draft proposal for presentation to the group when the Covid 19 restrictions are

# Q W E R T Y I T SERVICES

Your Local

COMPUTER EXPERTS



## ABOUT US

We are a local IT support company based in Oakbank, Perth. We have been providing computer support services to home users and small businesses for over 15 years.

We pride ourselves on offering the best service to all of our customers at an affordable price and we always go the extra mile to make sure all of our clients return to us time and time again.

David Silvester, owner

## Get in touch

8 Mountview Road, Perth, PH1 1LD  
info@qwertyitservices.co.uk  
www.qwertyitservices.co.uk

## OUR SERVICES

- ✔ Windows 10 Upgrades
- ✔ Virus Removal
- ✔ PC and Laptop servicing
- ✔ New Computer Setup
- ✔ Troubleshooting
- ✔ Upgrades and Advice
- ✔ Security Checkups

01738 479 564

lifted and CCllr Fraser will prepare a future update. *Action CCllr Fraser*  
Community Transport

CCllr Fraser reported that in light of the revised time table for route 56 and the decision by Stagecoach to withdraw their support of the service it is arguably the ‘beginning of the end’ for our bus service. The Council are now supporting the service however, there is no doubt they are monitoring its use and should there be further budget cut backs our bus service could be vulnerable. CCllr Pilmer did carry out a survey through Survey Monkey and the results were passed on to PKC's Margaret Roy. Two main points that came out of the survey were the slight alteration of bus timings and support for an extended service at Cuthill Towers.

With this in mind CCllr Fraser has approached the Council to explore our options.

The Council appears to be enthusiastic about creating a pilot project along the lines of an initiative being run in the NW of Scotland where the local council are, financially, supporting a locally managed mini bus style service. CCllr Fraser is hoping the timing of our approach to the Council may be beneficial to maximising any opportunity.

Margaret Roy – Public Transport Team Leader at PKC was to arrange a meeting with interested parties invited (GCC, Community Transport Association Scotland, a PKAVS staff member, Community Engagement Officer and Ward Councillors) however, this has been postponed due to the current restrictions.

It should also be noted that coinciding with our GCC approach to PKC, our PKC Councillors are also fronting an initiative through the Public Transport Forum to introduce a local community bus service based on smaller busses serving the Perthshire rural areas. This could involve

# IJC Bookkeeping and Payroll



**KEEP  
CALM  
AND  
HIRE A  
CERTIFIED  
BOOKKEEPER**


Don't let your paperwork get on top of you!

I offer a full range of Bookkeeping, Payroll and Self-Assessment services for Individuals and Small Businesses.  
A friendly, reliable service at very reasonable rates.

- Self-Assessment Tax Returns
- VAT Returns (MTD Compliant!)
- PAYE and Payroll
- CIS Returns
- Sales and Invoice Recording
- Bank Reconciliations
- Management Reports
- General Office Administration



Practice Licence No: 20709

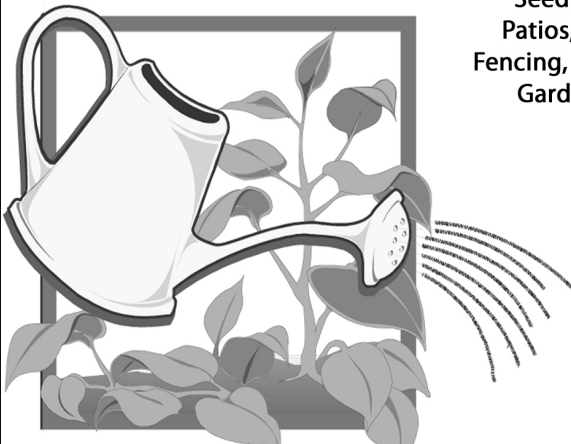
**Isla Craig** BSC (Hons), MICB PM. Dip  
Email: [islacraig70@gmail.com](mailto:islacraig70@gmail.com)  
Tel 01577 830125 / 07788 604202  
 @ijcbookkeeping

# Brian Todd Landscapes

1 Ash Grove, Glenfarg

Contact: 01577 830 728

or 07718 916 318



Seeding, Wall Pointing, Repairs,  
Patios, Driveways, Hedge Cutting,  
Fencing, Gutters cleaned and repaired,  
Garden Maintenance, Slabbing  
& all other odd jobs

**FREE  
ESTIMATES  
COMPETITIVE  
RATES**

three circular routes all intersecting each other one of which would pass through Glenfarg.

It is CCIr Fraser's belief that one of these initiatives will be required in the next few years as our scheduled bus service comes under more pressure through lack of use. An update is expected for the next GCC business meeting. *Action CCIr Fraser*

#### Binn Turbines Greencap Project

CCIr Ponton reported that she had received a letter from Greencap relating to a planning application in retrospect for the Turbines.

#### **4. Planning report**

CCIr Duncan reported:

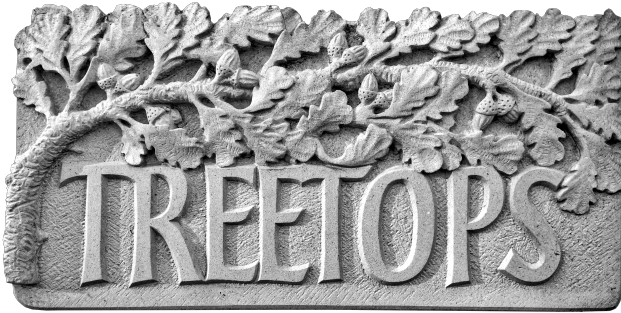
##### Binn Farm Energy from Waste Facility

Binn Farm have resubmitted a Proposal of Application Notice (PAN) for the Energy from Waste facility. A public consultation event was due to be held on 30th April at the Beinn Inn, Glenfarg but was cancelled for obvious reasons. If P&KC Planning agree to it, a 'virtual' consultation event may be organised.

##### Erection of 5 Dwellinghouses and garages Plots 1-5 Duncrievie Farm

PKC Planning were contacted on behalf of the GCC to request that the same Environmental and Safety Conditions that were attached to the previous consent be upheld. CCIr Duncan also requested clarification regarding the position of Duncrievie on the LDP. PKC will send CCIr Duncan an OS plan of the development boundaries which he'll pass on in due course.

Please note that all matters of correspondence to date related to the original conditions of 05/02080/FUL that were placed on this development.



**GILLIAN FORBES  
STONECARVER**

**BESPOKE  
HANDCARVED MEMORIALS  
AND LETTERCUTTING**

[www.forbesstonecarver.com](http://www.forbesstonecarver.com)  
email:[gilliancforbes@hotmail.com](mailto:gilliancforbes@hotmail.com)

01577 830754

**AUSTIN HEATING & ELECTRICAL**

**Boiler Servicing and Repairs - OIL, GAS, LPG & ELECTRIC**

**Aga / Rayburn Servicing & Repairs (Rayburn Guild Engineer)**



**Registered  
Business**



**Call - 07786 705261 or 01577 861188  
No Call-Out Charge**

[www.austinheat.co.uk](http://www.austinheat.co.uk)

## **5. Police Report**

CCllr Pilmer stated that there were no serious crimes within our community to report. The Community Police visit to the Village Hall Coffee hub had been well received and in the future the Community Police shall return. Police Scotland's Area Commander's Bulletins have now been added to the Grapevine FB on a weekly basis.

## **6. Finance Report**

Nil report, carried forward to next meeting.

## **7. AOCB**

### Covid 19 Resilience

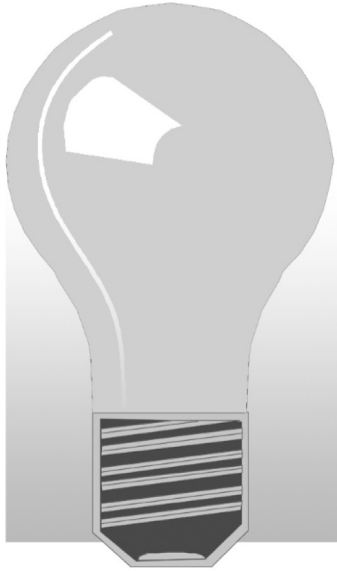
CCllr Fraser reported that there were some concerns at the outset of this crisis on how the lockdown might affect our vulnerable residents. He stated further that he believes that we have managed to circumvent most of the concerns using the proactive support of our local village shop and their agreement to act as a hub for villagers requiring assistance.

It is as a result of their superb interaction that most of the concerns appear to have been answered and that there has been a tremendous uptake on any 'reach outs' for village volunteers to date.

In addition, to village assistance, there is support being provided by other charity groups which is very welcome.

However, it would appear that the more vulnerable persons in our community will be in isolation for some time to come (perhaps until a vaccine is available) as such it is imperative that we don't lose sight of their needs as sections of our community are returning to their near normal routines. CCllr Fraser has requested information from the Council and this is being looked at which will provide more detail of those affected. There





# *John Allison*

## *(electrician)*

*'Ardblair', East Blair,  
Glenfarg, Perth PH2 9QL*

*Tel: 01577 830 678*

*Mobile: 07717 791 484*

*Email: johnwallison@btinternet.com*

*All types of electrical work undertaken*

*Also:*

Oil and gas central heating faults ~ Telephones  
Computer network cabling ~ TV aerials and  
distribution ~ Satellite re-alignment, alterations and  
distribution ~ Wall mounted TVs installed

***FREE ESTIMATES/ADVICE***

are also regional and national volunteering services which he has joined to pick up on any local cries for assistance. *Action CClr Fraser*

#### Security at the Village shop

The Village Shop's owners were offered funding from the GCC as a show of appreciation to assist with payment for CCTV facilities for the security and theft prevention of valued food stocks. This was agreed by the CClrs because the Village Shop owners have demonstrated valued assistance especially due to the Covid 19 outbreak. Rather unfortunately food stocks, that they had bought for the villagers, were removed by persons unknown in a deliberate act of theft from an adjoining outbuilding.

#### Lochelbank April 2020 report

CClr Pilmer stated that a meeting of the Lochelbank Wind Farm Panel (LWFP) had taken place at the beginning of April to discuss the pending funding applications. The attached Lochelbank Summary of Awards report was circulated to the GCC CClrs. This report will be passed on to the Editor of the village Newsletter for inclusion in the next issue and a copy is to be placed into the GCC noticeboard. CClr Pilmer thanked the two Glenfarg villagers, Mrs Rutherford and Mrs Wilkins, for their LWFP attendance and support. *Action CClr Pilmer*

#### Winter gritting

The GCC has been contacted by PKC's Roads Dep't asking for feedback relating to the gritting in our area over the winter period of late 2019 to early 2020. CClr Pilmer will reply with a request that certain areas within the village require to be gritted frequently and timeously. They are: bus stops, primary school access, school bus routes and pavements. *Action CClr Pilmer*

#### Co-option of G.Christie as a Community Councillor

*continued overleaf*

# ALPHAVET VETERINARY CENTRE

39 High Street, Kinross, KY13 8AA

For a caring professional service for all domestic pets



**TELEPHONE 01577 863 328**

E-MAIL: [alphavet@alphavet.co.uk](mailto:alphavet@alphavet.co.uk)

WEBSITE: [www.alphavet.co.uk](http://www.alphavet.co.uk)

Scotland's 1st Veterinary Practice Website!

Consultations by appointment

Monday to Friday 9.00am to 12.00 noon  
and 4.00pm to 6.00pm

Saturday 9.00am to 12.00 noon

Reception is open: Monday to Friday 8.30am to 6.30pm  
and Saturday 9.00am to 12.00 noon



***For our 24-hour Emergency Service  
please telephone 01577 863 328***

Stressed about the little jobs like ironing



**Sonias ironing**  
Milnathort  
£15 per black bag  
Free pick up and delivery  
Give me a call or text  
**07712454625**

## Home Cleaning Service



We are two mums that offer a reliable, local and efficient cleaning service.

Whether it be a weekly clean, two weekly, monthly, one off or end of tenancy clean we cater to all.

We are both experienced cleaners and provide a wide range of bespoke cleaning services to suit all our clients needs.

Please don't hesitate to give us a call for a FREE quotation.

Glenfarg and surrounding areas



Telephone: 07745 869698 or 07495 294146

It was agreed that we co-opt Mr Geoff Christie as a Community Councillor and this will be carried out in due time. There may well be a delay due to Covid 19 restrictions however, we shall process the matter with Mr Christie and PKC accordingly. *Action CClr Pilmer*

Close of meeting Monday 4th May 9:00pm

Next proposed GCC Business Meeting is Monday 6th July 7:00pm. To be confirmed

---

## **Glenfarg Community Council Monday 6th July 2020 Agenda and Business meeting via email**

### **Welcome**

**GCC Chair CClr Ponton thanked her team for their attendance through email and expressed her gratitude to the owners of the Village shop, to all villagers and many others for their valued help at this troubled time in our community.**

**Attendance through email:** CClr Ponton, CClr Pilmer, CClr Fraser, CClr Horsman, CClr Duncan, CClr Warder, G.Christie Minutes Secretary

- 1. Apologies** - none to report due to Covid public gathering restrictions
- 2. Approval of last business meeting Minutes.** Proposer CClr Pilmer and Secunder CClr Fraser

### **3. Action Points update:**

Crash barriers this is ongoing depending on funding and feedback is to be carried forward to next Business meeting.

*Action PKC Cllr Purves*

Greenbank Crescent feedback carried forward to next Business meeting. *Action PKC Cllr Robertson*

Footpath from Ladeside to Elm Lane feedback to be carried forward to next Business meeting. *Action PKC Cllrs*

# YOUR LOCAL PLUMBER

**NO CALL OUT CHARGE - NO JOB TOO SMALL  
DISCOUNT FOR SENIOR CITIZENS**

- Boilers - New Installations, Repairs and Servicing (OIL, NG & LPG) & Landlords Safety Certificates
- Bathrooms - New Installations, Upgrades & Shower Repairs
- Central Heating - Radiator valves repaired & replaced, system descale & flush, new radiator installations, Under floor heating, Fitting of gas hobs & cookers
- Dripping Taps - Outside Taps - Plumbing in washing machines & dishwashers - Toilet Repairs - Drains etc



**DOUGLAS MILLER  
01577 861623**



# Stewart Funeral Directors

14 High Street, KINROSS KY13 8AN  
Tel. (01577) 864607



**Modern Hygienic Preparation Room  
Private Family Viewing Suite  
24 Hour Personal Service  
Specialist Ambulance Transfers  
Funeral Planning Consultations  
Memorial Sales by Regency Memorials**

**24 Hour Emergency Service Tel. (01577) 864607**

### Festive Lighting

The Christmas lights are being delivered to the PKC depot on the 15th July. We can expect the invoice to arrive shortly for settlement. Clarification on how the GCC is to pay the Council for getting the commando sockets fitted to the lamp posts? *Action CClrs Fraser & Horsman*

### Glenfarg Website

Reflex Blue subsequently agreed to design an initial draft proposal for presentation to the group when the Covid 19 restrictions are lifted and CClr Fraser will prepare a future update. *Action CClr Fraser*

### Community Transport

On behalf of CClr Fraser CClr Ponton had received correspondence from M. Roy, PKC Transport Department. M.Roy requested that a survey be carried out via the Glenfarg village's Facebook page to request public comments with regard to an amended bus timetable in consideration of the Covid-19 virus. This was completed and a limited amount of amendments were to be made to the impending bus timetable.

### Binn Turbines Greencap Project

CClr Pilmer reported that he had received a letter from PKC Planning Greencap relating to a planning application that was passed by PKC in retrospect for the Turbines.

## **4. Planning report**

CClr Duncan that there was no report for this period.

## **5. Police Report**

CClr Pilmer stated that there were no serious crimes within our community to report. Police Scotland's Area Commander's Bulletins have now been added to the Grapevine FB on a weekly basis.

## **6. Finance Report**

TREASURER REPORT from CClr Horsman



WASP NESTS -  
ELIMINATION  
GUARANTEED

**AVAILABLE 7 DAYS A WEEK**  
**LOCAL RELIABLE PROFESSIONAL**  
**SPEEDY SERVICE FOR EMERGENCIES**

All pests professionally dealt with

Free Surveys Fully Insured

Domestic Commercial Agricultural

Contract work or One-off visits

wasps • bees • ants • rabbits • squirrels  
flies • fleas • moles • bedbugs • rats • mice  
moths • spiders • insect infestations • rabbit fencing  
bird proofing • pest birds • all other problem pests

Call us to sort out your pest problem

**01738 813751**

**07767 353535**

[www.andylawpestcontrol.co.uk](http://www.andylawpestcontrol.co.uk)

Bridge of Eam, Perth.



# TREASURER REPORT 6<sup>th</sup> July 2020

## 1. GCC – BALANCE ON ACCOUNT £464

Income – Nil

Expenditures – Nil

## 2. GCC NEWSLETTER ACCOUNT – BALANCE £13 744

This balance is made up as follows :

	Newsletter	Microgrant	Nursing Fund
		£	£
At 4 <sup>th</sup> May 2020	8 253	1 595	4 011
Income	70	Nil	Nil
Expenditures/payments	185	Nil	Nil
	<u>8 138</u>	<u>1 595</u>	<u>4 011</u>

Income/Expenditures since last meeting:

### Newsletter:

Income – Advertisers £70

Expenditures – Shop Security Donation £101 Glenfarg Web Hosting £84

### Microgrant:

Income – Nil

Expenditures – Nil

## 3. SCHOOL FUND £141

No Change

## TOTAL FUNDS HELD £14 349 at 6<sup>th</sup> July 2020



# J. Stewart & Son

## Landscaping and Paving



Landscaping and Ground Works



Ask about turfing

ALL WORK IS CARRIED OUT BY TRAINED CRAFTSMEN  
AND IS FULLY GUARANTEED

Call for a **FREE** no obligation estimate

**Tel: 01738 245465**  
**Mob: 07516 595192**

Quality just can't get any better!

**LANDSCAPING & DRIVEWAYS**  
Monoblock • Stone Paving  
Slabbing • Decking  
Sandstone Walls • Re-rendered  
Drainage • Gravel • Cobbles  
Heritage • Cotswold Drives  
Patios & Paths • Parking Areas  
Land Engineering  
Tidying and Full Garden Service  
Tree Surgery

## Give your feet a Treat



Private podiatry/chiropody in  
the comfort of your own  
home.

H.P.C. Registered

**Lisa Allison BSc Tel 01577 830678**

## **7. AOCB**

### Covid 19 Resilience

CCllr Fraser reported that the GCC received a grant payment of £320.00, for Covid related expenses, from PKC Local Action Partnership. This has been used to purchase face masks, sanitiser and gloves for the village shop

### Co-option of G.Christie as a Community Councillor

There may well be a delay due to Covid 19 restrictions however, we shall process the matter with Mr Christie and PKC accordingly.

*Action CCllr Pilmer*

### Kinross-shire and Glenfarg Stronger Communities Meeting

Last month was the first Kinross-shire and Glenfarg Stronger Communities Meeting where they had an opportunity to reflect on the community response to the Coronavirus pandemic and consider some next steps. At the time they pencilled in the next meeting to be held on Thursday 2<sup>nd</sup> July, however, they would like to confirm that the next meeting via Zoom will be held on Thursday 23<sup>rd</sup> July at 10am. A diary invite will follow in due course with Zoom meeting details. They would be grateful if we could let them know if a GCC CCllr is/are able to attend either by replying to an email or by responding to the Zoom invite when the Secretary receives it. They would also be grateful if the Secretary could let them know if there is anything in particular to be discussed at the meeting.

NLindsay@pkc.uk

### 20MPH Speed limits

The GCC was contacted by PKC Cllr Purves regarding the extension of 20MPH limits in the Perthshire area particularly in villages where restricted road widths/no pavements use of some roads by vulnerable users would make an implementation justifiable. The consensus of opinion from the GCC is that a 20MPH would be welcome in the village. Particularly Ladeside from the old hotel on Main Street to the Village



## TYREFAIR LIMITED

Unit 11  
Bridgend Industrial Estate  
Kinross

There is now a specialist tyre and battery dealer in Kinross that opens every day of the week, and has tyres and batteries at prices to suit your budget. **TYREFAIR** is a family business, with staff that have many years of professional experience in the tyre trade, and you can find them at **Unit 11, Bridgend Industrial Estate, or telephone on KINROSS 865656**. **TYREFAIR** welcomes trade account and offers the following goods and services:

- New tyres for cars and vans
- Guaranteed re-treaded tyres
- 4x4 tyres for business and leisure
- High performance tyre specialists
- Wheel alignment
- Top brand quality batteries
- Puncture and Vulcanised repairs
- Number plates made while-you-wait

**TYREFAIR** has a comfortable lounge, where you can relax while the work is carried out and you can rest assured that we will treat your vehicle with the care and respect that you demand.

**WHY NOT CALL IN, OR TELEPHONE NOW FOR MORE INFORMATION?**

**KINROSS (01577) 865 656**



*Individually designed  
hand-made cakes  
for all occasions*

**07814 239142**

Email: [info@leighsmithcakes.co.uk](mailto:info@leighsmithcakes.co.uk)

View photos at  
[www.leighsmithcakes.co.uk](http://www.leighsmithcakes.co.uk)  
Facebook: Leigh Smith Cakes



## Woodlands Bed and Breakfast

Church Brae, Glenfarg

[www.woodlands-bandb.co.uk](http://www.woodlands-bandb.co.uk)

Off Church Brae at end of lane below church

Ample car parking.

Two double bedrooms with king size beds

Resident's lounge

To book phone Cedric or Heather Wilkins

**01577 830300**

shop and then from Ladeside up to the park on the Duncreevie Road. Then from Ladeside along Greenbank Road to where the school is at the junction with Main Street.

We would still wish for the 40MPH from the Main Street heading out of the village past the entrance to Copperfields (new housing) being reduced to 30MPH however, that may be on the table already.

*Action Cllr Purves*

### Gigabit Kinrosshire

CCllr Pilmer reported that he had sat in on a Zoom Meeting organised by Cllr Purves with regard to a project to oversee investment in Internet upgrade throughout the Kinross-shire area and the funding that may be made available. Cllr Purves thanked everyone who attended the meeting on that Monday evening on the Gigabit Kinross-shire project.

Should any person be willing to sit on the Steering Group or believe that they have a case for their community/group of houses that could benefit from increased internet operational bytes then do contact the secretary by email ([secretary@glenfarg.org](mailto:secretary@glenfarg.org)) who will provide details.

Thank you to those who have already pledged their support for the project and to those who have indicated that they are willing to sit on the steering committee.

Cllr Purves stated further that he looks forward to hearing from any person on whether any person would like to be involved.

### Innogy Lochelbank Wind Farm Fund

CCllr Pilmer reported that as of July 2020 this Fund has been renamed to RWE Lochelbank Community Fund.

### Glenfarg Hotel

To be updated at a future meeting.

*Action CCllr Ponton*

Close of meeting Monday 6th July 9:00pm

Next proposed GCC Business Meeting is Monday 7th September 7:00pm. To be confirmed.

**Joan Cotsford,  
Independent  
Usborne  
Organiser**



**Quality children's books that  
everyone loves**

For new baby or birthday gifts, fiction and  
non-fiction from birth to adult, homework  
help, jigsaws, sticker books and more!  
Free local delivery

Facebook: @bookhappyjoan  
bookhappyjoan@gmail.com



*For all aspects of*  
**PIANO TUNING**  
*and repair*  
**David R. Watt**  
**(01577 830 345)**

Genuine Hardwood logs by  
the trailer-load or part load.  
Logs cut, split and delivered  
to suit individual needs.

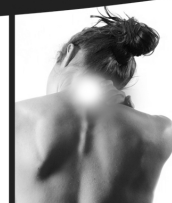
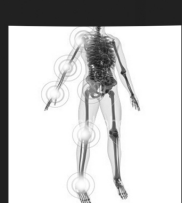
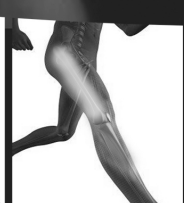


For further  
details ring  
Ewan  
Cheape  
Glenfarg  
830 349

# KINROSS Physiotherapy



- **SPRAINS/STRAINS/TEARS**
- **LOWBACK/NECK PAIN**
- **HIP/KNEE/ARM PAIN**
- **GOLFER/TENNIS ELBOW**
- **TENDON INJURIES**
- **ARTHRITIS**
- **TMJ (JAW PAIN)**
- **POST FRACTURE OR DISLOCATION**
- **REHABILITATION FOLLOWING SURGERY**



## **OPENING TIMES**

**MON - FRI  
10am - 9pm**

**37 New Road, Milnathort  
Kinross KY13 9XT**

**01577 864875  
07912 100 845**

**[enquiries@kinrossphysiotherapy.co.uk](mailto:enquiries@kinrossphysiotherapy.co.uk)**



# ELSTON (Est. 1983) LANDSCAPES

## Landscaping & Stump Grinding

### TREE STUMP REMOVAL SPECIALISTS

Tree and shrub planting

Seeding & Turfing

Paths, Patios & Driveways

Hedge Cutting, Pruning and Tree Surgery

Fencing, Trellis & Pergolas

Garden Drainage

Operated Mini Digger, Dumper & Turf Lifter For Hire

# 01738 850 742

[keith@elston-landscapes.co.uk](mailto:keith@elston-landscapes.co.uk)

[www.elston-landscapes.co.uk](http://www.elston-landscapes.co.uk)

Fully Qualified & Insured



## Index of Advertisers

Home Improvements and Repairs	Andrew Miller Fireplaces . . . . . 44 Andy Law Pest Control . . . . . 58 Austin Heating & Electrical. . . . . 50 Binn Skips . . . . . 13 Brian Todd Landscapes . . . . . 48 Douglas Miller (plumber) . . . . . 56 Elston Landscapes . . . . . 66 Glenfarg Garage . . . . . 41 John Allison (electrician) . . . . . 52 J. Stewart & Sons (landscaping) . . . . . 60 QwertyIT (computer repairs). . . . . 46
Health & Beauty	Avon . . . . . 15 Ferrier & Mackinnon Optometrists . . . . . 15 Kinross Physiotherapy . . . . . 65 Lisa Allison (chiroprody) . . . . . 60 Silver Lining Hair Studio . . . . . 42
Shops	Glenfarg Village Store . . . . . 28 John Anderson (Fish Van). . . . . 22
General Services	Alphavet Veterinary Centre . . . . . 54 Cameron & Greig Veterinary Surgeons . . 42 Cyprus Apartment Let. . . . . 11 Earnside UK & Continental Travel . . . . . 33 Gillian Forbes (Stone Carving). . . . . 50 Home Cleaning Service. . . . . 54 IJC Bookkeeping & Payroll. . . . . 48 Leigh Smith Cakes . . . . . 62 Letham Farm Glenfarg Logs . . . . . 64 Piano Tuning & Repair . . . . . 64 Pooch Perfect (dog grooming) . . . . . 40 Sonias Ironing . . . . . 54 Stewart Funeral Directors . . . . . 56 Tails & Trails (dog walking) . . . . . 40 Tyrefair Limited . . . . . 62 Usborne (Books). . . . . 64 Woodlands Bed & Breakfast . . . . . 62



# General Information

## Doctors' Surgeries

Loch Leven Health Centre, Muirs, Kinross - **01577 862 112**

Daytime emergency number - **01577 865 252** - NHS 24 Out of Hours - **111**

## Library

The van stops at Main Street on every other Tuesday from 12 to 1pm

## Mobile Post Office

Stops outside the Joiner's workshop, Ladeside

**Mon** 11.30am-12.30pm : **Wed** 11.15am-12.15pm : **Fri** 1.15pm-3.15pm

## Recycling Points

**Glenfarg:** Arngask School car park for cans, paper and glass, Arngask School playground for clothing and shoes.

Wallace Park car park for glass.

**Kinross:** Causeway Car Park, Sainsbury's, Station Road, for cans, glass, paper and textiles.

Bridgend Industrial Estate Open Mon-Fri 9am-7pm, Sat-Sun 9am-5pm

**Milnathort:** Thistle Inn, Black Loan for cans, glass and paper

<b>Kerbside Recycling Service: Waste Collection Dates</b>						
Green lid (Non-recyclable waste) Blue lid (Paper, cardboard, cans, plastic) Brown lid (Garden & food waste)						
<b>Glenfarg</b>	<b>September</b>	Green Lid	Fri	11	25	
		Blue Lid	Fri	4	18	
		Brown Lid	Thu	10	24	
	<b>October</b>	Green Lid	Fri	9	23	
		Blue Lid	Fri	2	16	30
		Brown Lid	Thu	8	22	
	<b>November</b>	Green Lid	Fri	6	20	
		Blue Lid	Fri	13	27	
		Brown Lid	Thu	5	19	
<b>Duncreevie</b>	<b>September</b>	Green Lid	Thu	10	24	
		Blue Lid	Thu	3	17	
		Brown Lid	Mon	14	28	
	<b>October</b>	Green Lid	Thu	8	22	
		Blue Lid	Thu	1	15	29
		Brown Lid	Mon	12	26	
	<b>November</b>	Green Lid	Thu	5	19	
		Blue Lid	Thu	12	26	
		Brown Lid	Mon	9	23	